

# PREFAB stairs™



## PLEASE READ ASSEMBLY INSTRUCTIONS

### PARTS LIST:

- of 60 x 10mm Coach Bolts & Nuts
- x Treads or Steps
- 2 x Stringers or sides
- Galv. Angles

**STEP 1.** Place bolts through holes in stringers & hit with hammer to seat into position. (thread of bolt facing the inside of stringer)

**STEP 2.** Fit galvanised angle brackets to inside of stringer, using nuts provided. (Mitred corners of angles facing downwards.)

**STEP 3.** Place bolts through holes in treads & hit with hammer to seat into position. (Thread of bolt facing the "X" side of tread.)

( NOTE: The "X" mark goes to the back of stair unit. )

**STEP 4.** Place stringers in position. Place treads on brackets & gently tap into position. Fit nuts (hand tight only).

**STEP 5.** When all treads are in place, tighten with adjustable spanner (firmly).  
**(NOTE: Do not over tighten.)**

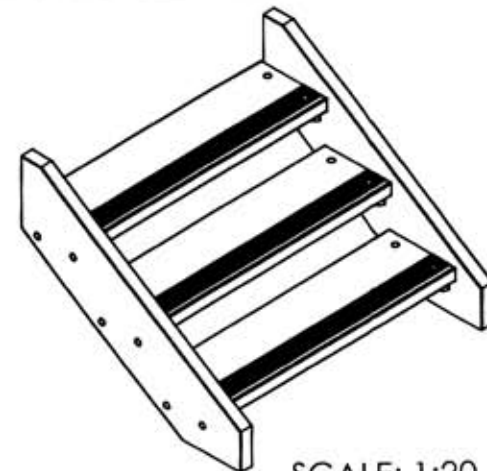
**CENTRE SUPPORT.** Assemble stair as above. Fit centre support underneath treads. Nail through top of each tread into centre support. Clamps are recommended to hold centre support during installation.

**FILLETS.** Stairs over 170mm rise require fillets. Assemble stair as above including centre support if required. Position fillets in line with the front edge of the bracket. (This is usually 20-25mm from the front edge of each tread). Nail into position. If centre support is included, butt the fillet against the centre support and nail as above.

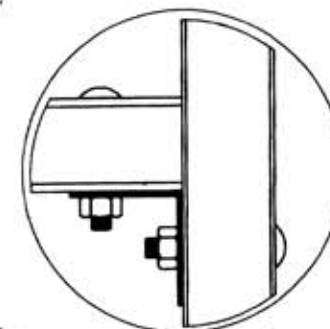
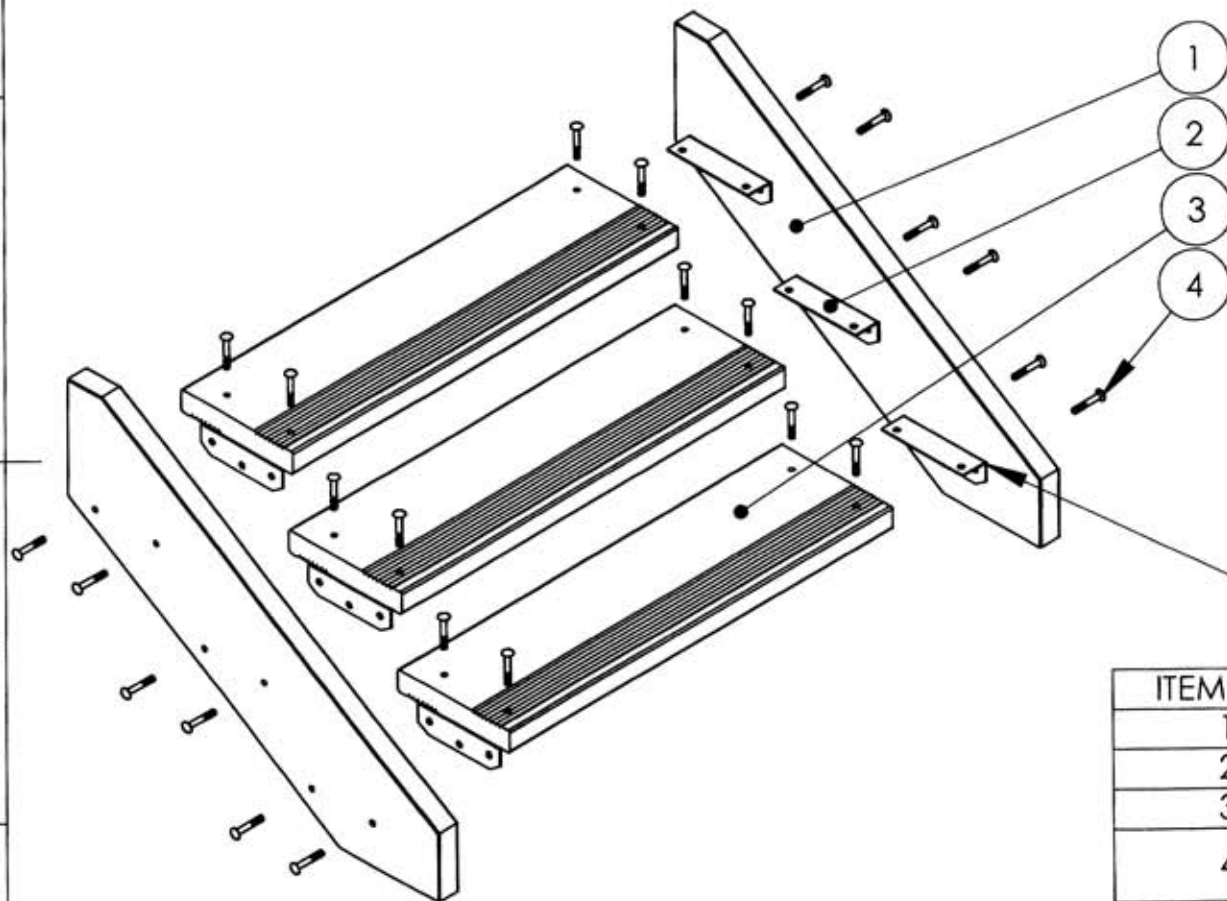


WHEN STAIR UNIT IS ASSEMBLED AND IN POSITION  
SECURE FASTENING OF BOTH ENDS OF STRINGERS IS REQUIRED

Please Note:  
 Assembly method is typical for all stair units



SCALE: 1:20



Assembled View

ITEM NO.	PART NUMBER	QTY
1	Treated Pine Stringer	N/A
2	Galvanised Bracket	N/A
3	Treated Pine Reeded Tread	N/A
4	M10x60 Class 4.6 Cup Head Galvanised Bolt	N/A
5	M10 Class 4.6 Galvanised Nut	N/A

3 Tread Stair Kit Example  
 Shown Above

SCALE: 1 : 12